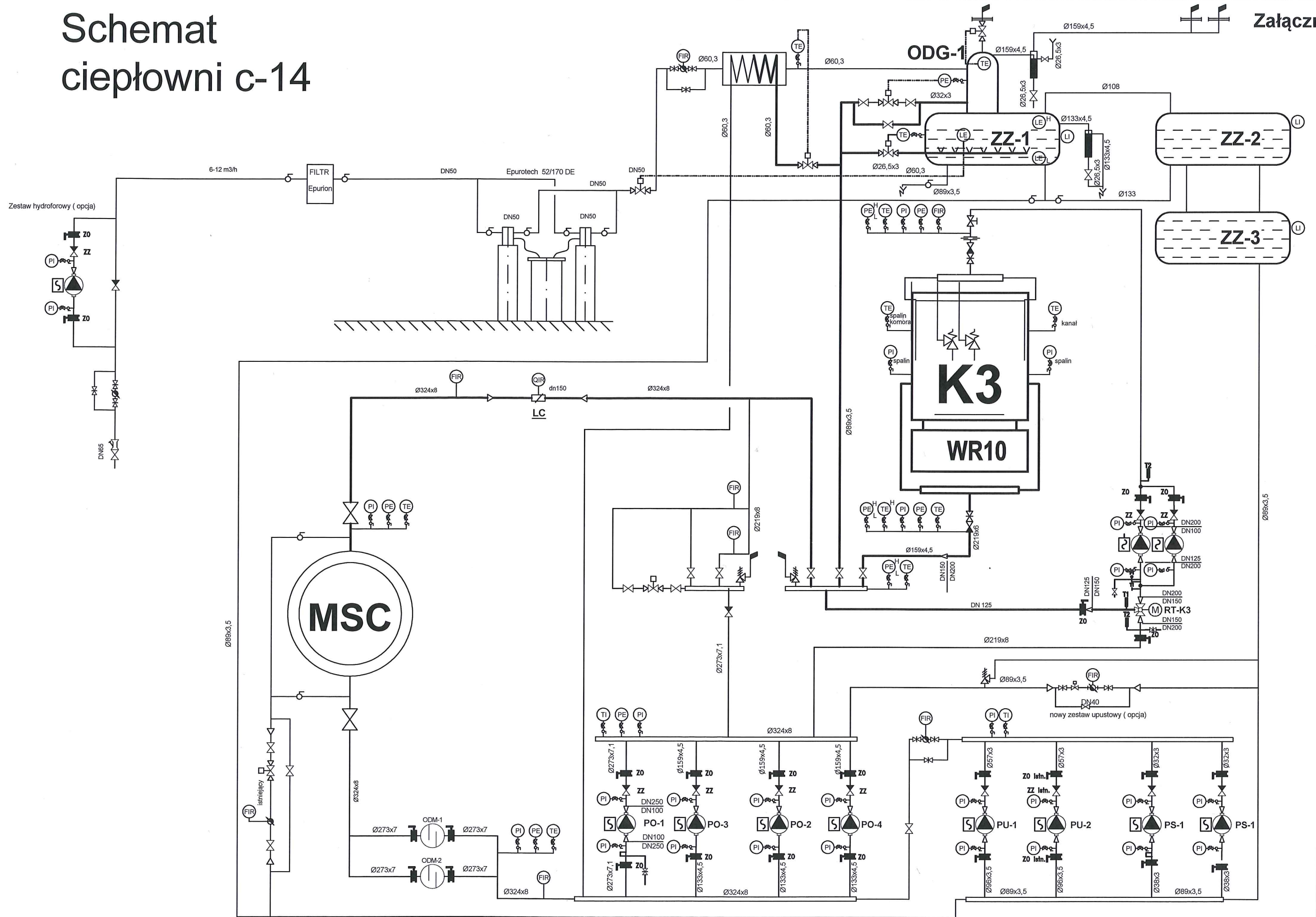


Schemat ciepłowni c-14

Załącznik nr 4



PO 1-nowa ETN 125-100-250/260 G = 300 m ³ /h H = 80 msw n = 2980 obr/min Ns= 90 kW, U=3x400V MX400/75C90Pistn.c-13	PO2-istn. 100PJM290 G = 168 m ³ /h H = 97 msw n = 2900 obr/min Ns= 55 kW, U=3x400V SLF250 M2-55-istn.c14	PO3-istn. 100 PJM270 G = 150 m ³ /h H = 97 msw n = 2900 obr/min Ns= 45 kW, U=3x400V Elvovert SD 400/55C75P	PO4-istn. 100 PJM270 G = 42 m ³ /h H = 97 msw n = 2900 obr/min Ns= 45 kW, U=3x400V Elvovert SD 400/55C75P	PU-1-istn. 65 PJM 190 G = 42 m ³ /h H = 41 msw n = 2900 obr/min Ns= 7,5 kW, U=3x400V Bez przetwornicy	PU-2-istn. 65 PJM 200 G = 36 m ³ /h H = 32 msw n = 2860 obr/min Ns= 7,5 kW, U=3x400V Bez przetwornicy	PS-1-istn. 25YSN-4.1 G = 4,5 m ³ /h H = 60 msw n = 1480 obr/min Ns=2,2 kW, U=3x400V Bez przetwornicy	PS-2-istn. 32YSN-3 G = 8,5 m ³ /h H = 66 msw n = 1480 obr/min Ns=2,2 kW, U=3x400V Bez przetwornicy	PK-3.1-nowa ETB 125-100-315/320 G = 160 m ³ /h H = 33 msw n = 1480 obr/min Ns= 22 kW, U=3x400V MX400/18C22P-ist. c-13	PK-3.2-istn.c-13 ETB 125-100-315/320 G = 160 m ³ /h H = 33 msw n = 1480 obr/min Ns= 22 kW, U=3x400V MX400/18C22P-ist. c-13
--	--	--	---	---	---	--	--	---	--

RT-K3-nowy
 np. LDM+Regada
 Kvs= 360m³/h
 dH = 1,3mH2O
 DN150
 1 kpl.